



Principal's Report

Dear Families,

Welcome to Week 6 of Term 2. The last fortnight has been busy at school, as it seems to be every year at this time.

Our student leaders did a wonderful job of organising our fundraiser for Story Dogs. We were able to raise \$113.40 for this organisation. We would like to congratulate the students on this achievement. A big thank you to the Klein family for donating the bread for our sausage sizzle. We would also like to thank Belle Dodd for her fantastic barbeque skills on the day. The students all enjoyed their sausages in bread!

Staff had a busy day on Monday, with our student free day. All staff were able to update their CPR and anaphylaxis, with all dummies making a full recovery.

Teaching staff also spent a large portion of the day working towards our mathematics targets within our Annual Implementation Plan. Staff are excited with our new learning and the development of updated school-wide practices. We look forward to sharing our journey with you all, starting in our Term 3 newsletters.

You may have seen/ be seeing a few new faces around the school at the moment. In order to move into our new reporting system, teachers are being provided with a day out of the classroom to write their reports. In addition to this, teachers are each being provided with a day to plan for Term 3's learning. Although the provision of these days sees the teachers out of their classrooms, it is necessary to provide this time for staff to provide high quality planning and reporting, in line with their professional learning goals. This is all part of our professional development plan for the year, and was not unexpected.

Have an enjoyable fortnight,

Tamara Halket

<mailto:tamara.halket@education.vic.gov.au>

2023	JUNE
1	Lunch Order Day Fundraising Committee Meeting—9am
7	LV Division Winter Sport—Selected Students from Gr 3-6 MARC Van Lunch Order Forms Due—12pm
8	Lunch Order Day Mobile Library Scholastic Book Club Orders Due
12	King's Birthday Public Holiday
14	Lunch Order Forms Due—12pm No MARC Van
15	Lunch Order Day
20	Building & Grounds Meeting—7pm School Council Meeting—7:30pm
21	Semester 1 Student Reports Issued No MARC Van
23	Last Day Term 2—Early Dismissal at 1:30pm

Reminders & Notices

- Our next school **fundraising sub-committee meeting** will be held at school tomorrow, 1st June at 9am. New members are welcome to attend, or contact Kate on 0438 331 348 if you can help.
- Selected students from Grade 3-6 have received a consent form for the **Latrobe Valley Division Winter Sports** taking place on Wednesday, 7th June via Compass. Consent and payment is due by 3rd June.
- **Student Enrolment Details Update** requests were emailed home last Wednesday. Please email Cindy with any updates by Wednesday, 7th June.
- Reminder—Next Wednesday, 7th June will be the **last MARC Van for Term 2**. Please return any borrowed books on this day.
- **Scholastic Book Club** orders are due back at school by Thursday, 8th June.



TERM DATES 2023/2024

Term 2	24th Apr to 23rd Jun
Term 3	10th Jul to 15th Sep
Term 4	2nd Oct to 20th Dec
Term 1	29th Jan (teachers start) to 28th Mar

Willow Grove Primary School Student Acknowledgments

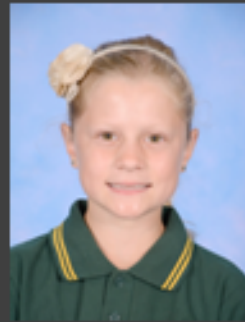
GRADE P/1/2



Logan K.

For always following instructions and being kind to others.

GRADE 3/4



Loui B.

For demonstrating significant growth in subtraction.

GRADE 5/6



Jacob G.

For participating well in MARC Van.

SPECIALIST

JAPANESE



Ollie B.

For a fantastic roll call in Japanese today!

RESPECT Resilience TEAM WORK COMMUNITY

Prep—2 Staffing Update

We are sad to say farewell to Miss Traynor, this coming Monday. We have appreciated having her in our WGPS team, and have been grateful to have her teaching in our P-2 class. On Tuesday, Miss O'Byrne will take over in the class until the end of Term 2. Miss O'Byrne is well known by Miss Traynor, and we are lucky that these teachers have been able to discuss the class and school. We are looking forward to a smooth transition for the rest of term.

Due to the teacher shortage that is an ongoing issue in the state, we are still advertising for a replacement teacher to begin in Term 3. We will update families with information as soon as we are able.



Community Cupboard

We would like to announce the Grand Opening of our new Community Cupboard!

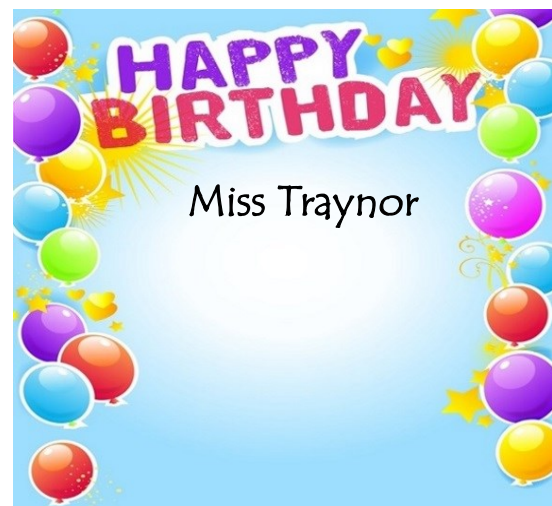
This cupboard is located in the foyer of the main building. We encourage our community to take items that they need. We also encourage people to re-stock the cupboard with items that you may have purchased or grown, but do not need. I know that I personally have a number of items that I accidentally selected to allow substitutes for in my online shopping orders, that I wished I had not and are simply taking up space!

School Production

This week our 3-6 students will eagerly begin the audition process for a part in the school production. Auditions will run over the next few weeks on a Tuesday. The Production of Ali Baba and the Bongo Bandits will be held at Lowanna College on the 14th of September during the last week of term 3. There are lots of rehearsals to take place between now and then as well as arranging school timetables and specialist classes to ensure we balance student learning and production preparation during term 3. We will continue to provide regular information regarding how the production is progressing during the term.

*Thank
you!*

- Thank you to Belle Dodd for cooking the Education Week BBQ.
- Thank you to the Klein family for donating the bread for the BBQ.
- Thank you to Leighton Gibson for donating \$250 to our school.
- Thank you to the Moe Lions Club for donating books to our school community.



Grade P/1/2 News

This term we have been investigating animals. As students have come up with interesting questions, we have found the answers. Here are some interesting facts we have discovered:

- ◇ Ostrich have no teeth, so they eat stones that grind up the food.
- ◇ The Weedy Sea dragon has no stomach. It eats all day.
- ◇ A wombat's pouch faces backwards so when it is digging in the dirt it doesn't fill with dirt.
- ◇ A sloth lives in the jungle.
- ◇ Snakes taste with their tongue.
- ◇ Honeybees are just like other bees.
- ◇ Grasshoppers have ears in their legs.
- ◇ Bees vomit honey into other bees.



Grade 3/4 News

Collaborative Art

Over the past few weeks, the Grade 3/4 students have been working on a collaborative indigenous art piece. All the students coloured in their own section of the artwork before we taped it together to make one big piece. We are still in the process of putting all the pieces together but so far it looks awesome. This artwork was the theme artwork for this year's National Sorry Day. As a class we discussed the importance of Sorry Day and Reconciliation Week and the idea of coming back to friendship after a negative event.





MARC Library News National simultaneous Storytime 2023

More than 2 million children reading = National Simultaneous Storytime 2023 (NSS). During MARC Library we have been celebrating all things sloths to support the reading of the book *The Speedy Sloth*. All children have enjoyed the story which promoted the importance of persistence, with a good dose of humour too! Foundation children made a sloth, 1/2 students are making a poster to share their new knowledge about sloths and Senior students have followed instructions to draw sloths and learnt new facts about sloths. NSS is a national event to focus and celebrate the joy of reading and books, it is lovely to see Willow Grove students embracing everything books.



Gippsland Art Gallery Visit for Education Week

We were very lucky to have a visit from Meg at Gippsland Art Gallery during Education Week.

Students participated in two art activities. The first was a stop-start fun musical drawing game to get the creative drawing juices flowing and the second was called art taskmaster. This was a challenging drawing game where the taskmaster directed their teams to draw particular things with a variety of materials and objects. Students needed to put their problem-solving caps on!



Division Cross Country

On the 17th May our long distance runners took part in the Division Cross country at Gaskin Park Churchill.

The results were as follows;

Mikayla ran 24th out of 30 runners.

Jobe-placed 24th, Lucas, 27th and Ollie R 30th out of 35 runners.

Lily came 10th and Jordy 12th. Both have made it through to the Regional Cross Country in Drouin!

Congratulations on an amazing effort to all of our runners!!





Willow Grove Primary School
2520
(Formerly Latrobe River State School &
Willow Grove State School)
1883-2023



1920-1930

By the 1920s the now 40 year old buildings were in a dilapidated condition. The school committee, which consisted of Mr. G Needham, W. Riley, C.P. Williams, H Lamont, and S. Needham, made a number of pleas to the Education Department for money to repair to buildings.

It was noted in the School Committee's minutes on the 20th of April 1920, "that a report of the conditions of the school be drafted, and renovations suggested, said report to be forwarded to the department." This was moved by Mr Geo. Needham and seconded by Mr. C.P. Williams.

At the meeting on 18th February 1921 the School Committee agreed to remove trees which are shading windows.

The building had been allowed to deteriorate to such a state of disrepair that £240 had to be spent on remodelling in August 1921. (Willow Grove P.S. 2520 Centenary) In the School Committee meeting on the 11th of May 1922, agreed "that offers be asked for repairing fence." Mr G. Needham offered to make further inquiries into purchase of a tank. Mr J. Balfour (chairman) was to "obtain the cost of material for shelter shed of the dimensions 20' x 12', height in front 10', rear 8'." It was also requesting that the school be scrubbed out. "Mr Abbott (principal) explained that there was an allowance of 18s 4p for maintenance of school but the amount was not sufficient to pay for scrubbing out the school."

The shelter shed was erected by Mr Irvine. The School Committee requested the Education Department contribute towards the cost of the shelter shed. They contributed £9.7.6 of the £21. A working bee on Monday 26th June 1922, erected a new fence.

In the report to the Department in May of 1922 the following comments were made about the buildings.

"much of the woodwork especially that forming window casements was fast falling into decay. The windows need urgent attention, for none will close perfectly; and one was blown out completely by a strong wind, the decayed wood tearing away from the hinge. As this window faces the side often to storms we temporarily arranged matters by acquiring a window from the sheltered side.

Inside the building we found conditions much worse. The want of paint had caused warping of the timber....The floor itself is worn ...and it is quite evident that the joists

beneath are in a state of decay...the rear portion of the school was in semi darkness...The out offices ... are practically beyond repair, especially that used by the girls... and the structure is now in a position such that it can be blown over by the first strong wind.

To briefly summarize, we would recommend that the school be generally renovated, painted outside and inside, the floor repaired after being studded, that more window space be allocated, and that the outhouses be renewed as soon as possible."

In a bushfire in January of 1926 the school's fencing was destroyed. Head teacher, Mr Abbott "reported that 'Local residents, notably Messrs. W. Riley, C.P. Williams and his sons arrived on the scene and by desperate effort were enabled to save the garden fences, outbuildings and even the school itself.'" (Willow Grove P.S. 2520 Centenary) It took a year for the damage to be repaired.

The average attendance in May of 1921 was 20, with 24 students enrolled. In February of 1926 the average enrolment was 18.

In 1929 the motion to have the school moved to a more central location, the current site, was submitted. The process was beginning.

As I read the report about the school, I wonder how much has changed? We currently can't use the staffroom due to repairs in the roof to remove mould and repair leaks, the Prep side of the P/1/2 class regularly has no lights (but no one can find a fault), the outside of the old building has seen better days, and the toilets are old and are in need of refurbishment... it seems the problems have not changed in 100 years. However, we are currently working to change this so that we do not have the same report in the next 100 years (or far sooner than that!)

Murphy's Meats Trafalgar
Gracies Arcade
TRAFALGAR 3824
5633 1194

Peter Nation Contracting

143 Marslens Road
HILL END 3825
0427 055 047

Helloworld Travel Moe
48 Moore Street
MOE 3825
5127 3388

Delfab Engineering
9 Della Torre Road
MOE 3825
5126 1425

Hill End Football Club
Main Road
WILLOW GROVE 3825
5635 2243

WILLOW GROVE PRIMARYSCHOOL



*FOOTY TIPPING
COMPETITION
2023
SPONSOR BOARD*

Maximus Plumbing & Gasfitting

MOE 3825
maximuspg@outlook.com
0474 173 710

MKL Electrical

NEWBOROUGH 3825
mkl.electrical@live.com.au
0408 275 335

Mayes Barbers

Shop 12
36 George St
MOE 3825
5127 3849

Law Somerville Industries
90-92 Moore Street
MOE 3825
5127 7066

Trafalgar Newsagency

97 Princes Highway
TRAFALGAR 3824
5633 1169

Glenda Hall Contracting
WILLOW GROVE 3825
0429 193 314

Trafalgar IGA
5 McCrorey Street
TRAFALGAR 3824
5633 1124

Beleza Uniform Shop

26B George Street
MOE 3825
5126 2165

Trafalgar Tyre
Service
110 Contour Road
TRAFALGAR
5633 1097

Laurie Bury

Cartage Contractor
Balfours Road
WILLOW GROVE 3825
0428 392 911